



GAT MONTHLY MEMBERSHIP PROGRESS REPORT

Results as of: 5/31/2022

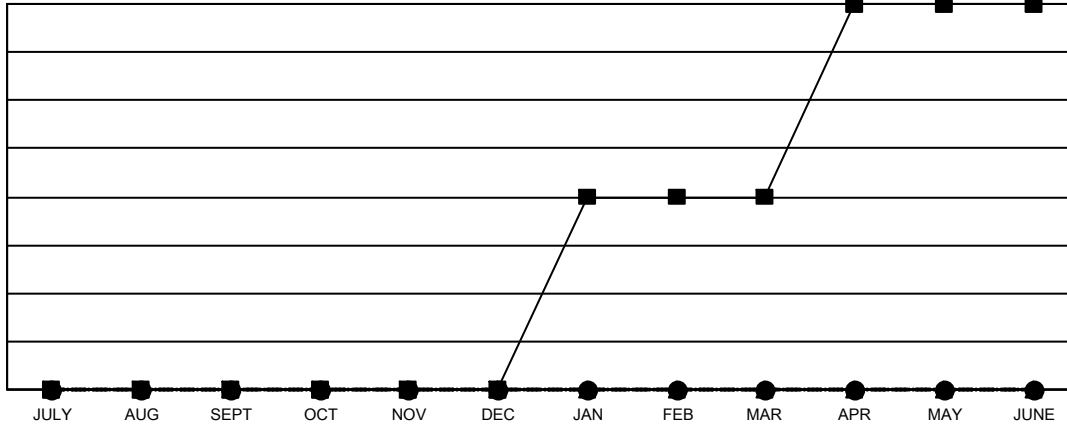
Multiple District 38

LOCATION: NEBRASKA

Clubs			
RESULTS FOR 2021-2022			
QUARTER	NEW CLUB GOAL	NEW CLUBS	DROPPED CLUBS
JULY/AUG/SEPT	0	0	0
OCT/NOV/DEC	0	0	0
JAN/FEB/MAR	2	0	0
APR/MAY/JUNE	2	0	0

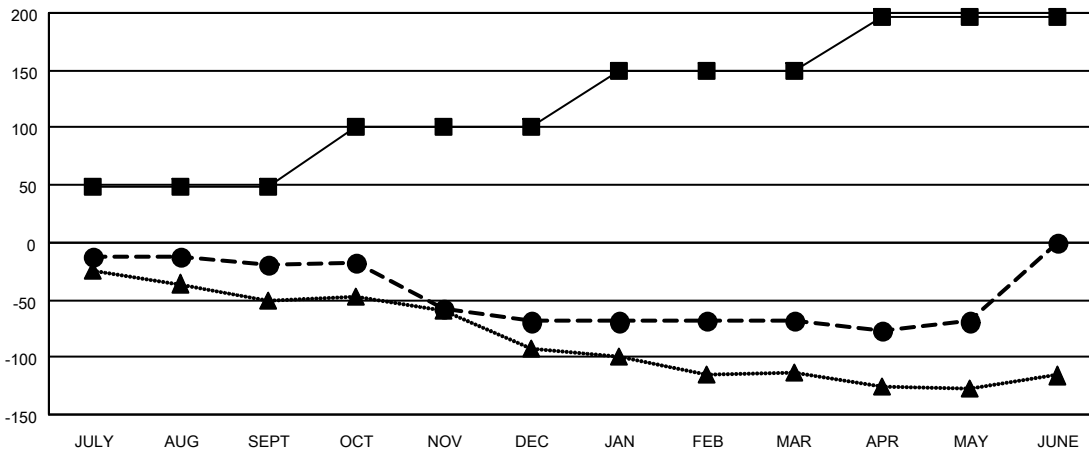
Members			
RESULTS FOR 2021-2022			
QUARTER	MEMBER GROWTH NET GOAL	MEMBER GROWTH ACTUAL	DROPPED MEMBERS ACTUAL (including transfers)
JULY/AUG/SEPT	48	49	65
OCT/NOV/DEC	53	36	84
JAN/FEB/MAR	48	41	38
APR/MAY/JUNE	48	42	43

GOALS AND ACTUAL NEW CLUBS CUMULATIVE



- CURRENT YEAR GOALS FOR NEW CLUBS
- CURRENT YEAR ACTUAL NEW CLUBS
- ▲- LAST YEAR ACTUAL NEW CLUBS

GOALS AND ACTUAL MEMBERS CUMULATIVE



- MEMBER GROWTH NET GOAL
- MEMBER GROWTH ACTUAL
- ▲- LAST YEAR MEMBERSHIP ACTUAL

DROPPED CLUBS: 0	63 CLUBS OF 123 ADDED 1 OR MORE NEW MEMBERS	GENDER DISTRIBUTION
DROPPED MEMBERS	CLICK HERE FOR CUMULATIVE MEMBERSHIP DATA	MALE 2,188 (73.15%)
DECEASED 44		FEMALE 803 (26.85%)
CLUB CANCELLED 0		NON BINARY 0 (0.00%)
OTHER 186		PREFER NOT TO ANSWER 0 (0.00%)
TOTAL 230		TOTAL FAMILY UNIT MEMBERS 632
		FAMILY MEMBERS PAYING HALF DUES 319